

THE **Transformative Potential** OF LEARNER-CENTERED EDUCATION

A Research Review of Outcomes and Impact for Learners

Executive Summary

February 2026



The Opportunity

Learner-centered education holds transformative potential for young people. Realizing this full potential will require increased investment in research, systems change, and field-building. This research review begins to build the evidence-based foundation needed to support such investments by synthesizing research aligned with the learner-centered approach.

Purpose and Strategic Context

Learner-centered education has gained growing attention as a promising way to support young people's growth and development, but its implementation in most K–12 settings remains rare. Two key barriers appear to hinder its wider adoption: 1) limited research clearly documenting the approach's impact, and 2) limited investment in systems change and ecosystem development. Our review begins to address the first barrier—which can inform decisions about the second—by exploring this question: *What does research suggest about the potential outcomes and impact of learner-centered education for learners?*

Methodology

To explore this inquiry, we conducted a literature review involving the examination of over 500 research articles across numerous related fields. From these, 93 studies from 22 bodies of research were selected based on their alignment with the five key elements of learner-centered education:

- 1) Learner Agency
- 2) Socially-Embedded
- 3) Personalized, Relevant, and Contextualized
- 4) Open-Walled
- 5) Competency-Based

These selected studies were analyzed thematically to synthesize the following key findings.

Access the accompanying [Literature Guide](#) for annotated summaries of all 93 studies



Key Findings

Three complementary analyses demonstrate learner-centered education's transformative potential. First, research aligned with each of the five key elements shows distinct patterns of potential outcomes, with notable social-emotional benefits emerging across all elements. Second, the review findings suggest that learner-centered education may produce comprehensive outcomes across cognitive, social-emotional, and behavioral domains, with evidence of long-term benefits. Third, a final analysis revealed four core processes to explain how learner-centered education can lead to these transformative outcomes.

Potential Outcomes per Key Element

Aligned research indicates that learner-centered education may promote a range of promising outcomes across the five key elements. Examples of these benefits include the following:

- **Learner Agency** has the potential to increase engagement, intrinsic motivation, and self-regulation.
- **Socially-Embedded Learning** has the potential to strengthen belonging, resilience, and protective factors that support well-being.
- **Personalized, Relevant, and Contextualized Learning** has the potential to affirm identity, enhance motivation, and improve academic achievement.
- **Open-Walled Learning** has the potential to deepen real-world competencies, civic engagement, and community connection.
- **Competency-Based Learning** has the potential to promote long-term skill development, academic growth, and future readiness.

IMPORTANT NOTE

This review examines approaches that align with learner-centered education, but most of the research does not involve the direct study of learner-centered environments. As such, findings from the review are suggestive of the learner-centered approach's potential, as opposed to definitive proof of its impact.

Potential Outcomes Across Developmental Domains

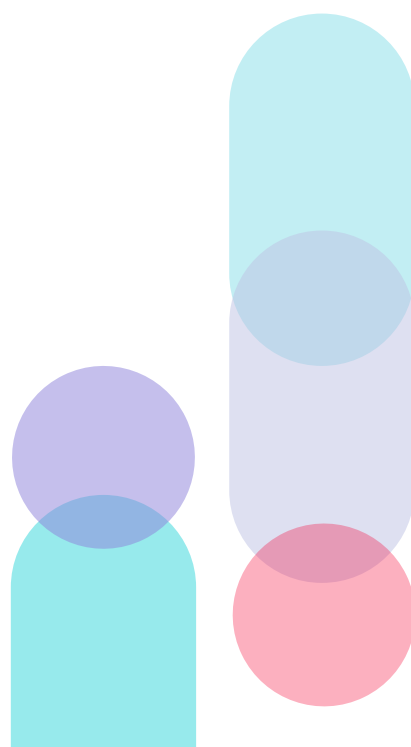
Findings also suggest that learner-centered education may support young people across multiple developmental domains. These domains are outlined below with examples of outcomes documented across the literature:


- **Cognitive Outcomes:** critical thinking, problem-solving, metacognition, and academic skills
- **Social-Emotional Outcomes:** self-esteem, emotional regulation, resilience, and sense of belonging
- **Behavioral Outcomes:** motivation, persistence, civic participation, and healthier decision-making
- **Long-Term Outcomes:** lasting improvements in mental health, sustained college and career success, and lifelong community engagement

Potential Drivers of Impact

Four core processes identified in the research illuminate how learner-centered education may lead to the abovementioned outcomes:

- **Transforming Engagement Through Agency:** Giving learners meaningful choice can rewire their relationship with learning, boosting motivation, attendance, and achievement.
- **Transforming Identity Through Connection:** Strong relationships and belonging can help learners develop positive self-concepts and resilience, especially for historically marginalized groups.
- **Transforming Learning Through Asset-Based Approaches:** Building on learners' strengths and mastery-focused pathways can create positive cycles of competence and confidence.
- **Transforming Purpose Through Authentic Learning:** Real-world, meaningful learning can help youth connect their education to their sense of purpose, empowering them as motivated agents of change.





In sum, the convergent evidence across 93 studies from 22 bodies of research indicates that learner-centered education has the power to fundamentally reshape educational experiences, creating environments where young people thrive academically, develop strong identities, and gain the tools to contribute meaningfully to their communities.

Application of Findings

This review provides a robust evidence base for educators and leaders advocating for learner-centered education, as well as those offering philanthropic support or positioned to create enabling conditions for systems transformation. The curated research and review findings can be leveraged to inform program design, professional development, advocacy efforts, and stakeholder engagement across diverse educational contexts.

The Research Points to Significant Potential

Building on this research foundation, three strategic investment areas emerge as important next steps for unlocking learner-centered education's transformative potential:

- Funding direct studies of authentic learner-centered environments
- Developing frameworks to assess the quality of the approach's implementation
- Supporting longitudinal studies that track long-term impact over time

We have a unique opportunity to make this educational vision a reality through focused investment in learner-centered systems transformation, measurement innovation, and field-building. The time to act is now.

Access the [Full Report](#) for more details on this review

